



A BUSINESS PROPOSAL



MEETING & EVENTS

Sapporo is a large city, the economic, governmental, and cultural center of Hokkaido where approximately 2 million residents live, yet it is blessed with nature. We have four very different seasons such as the pleasant sunny days in summer or being covered with a blanket of white snow in winter. Sapporo is also a great location with easy access to world-famous Niseko, Otaru, Lake Shikotsu, and golf courses.

MEETING SUCCESS KEY

ANA Crowne Plaza Sapporo is one minute away from Sapporo Subway Station Exit 21 and is within walking distance of the Hokkaido Government Office, Sapporo City Hall and Former Hokkaido Government Office Building, a.k.a. Red Brick Office. The hotel is facing a major street and provides 96 secure car parking spaces, so it is a convenience for a road trip stopover.

The hotel has been providing warm hospitality to guests for over forty years and is loved by the Hokkaido locals, including Sapporo citizens, as a landmark of Sapporo.

We have the widest range of banquet rooms in Sapporo. From our large banquet hall capable of accommodating up to 350 people to our sky banquet halls on a higher floor or tatami mat rooms and more.

During meeting breaks, we provide snacks and soft drinks, or we arrange bento boxes or meals at our restaurant for lunch.

We are dedicated to providing you with great services and support to turn ideal events into reality.

CROWNE EVENT DIRECTOR

The Crowne Event Director is a dedicated event specialist and will assist you with all of your event planning, ranging from business meetings to banquets to conventions. Our dedicated event director will take you step by step through the process of planning to the end of your event. We offer tuna-cutting demonstrations, artificial snowfall, and YOSAKOI Soran, a unique style of dance based on the Yosakoi Festival of Kochi Prefecture featuring naruko clappers and Hokkaido's Soran Bushi folk melodies. We will provide a variety of attractions featuring Sapporo.



2-HOUR RESPONSE GUARANTEE

We guarantee a 2-hour response to your initial inquiry.* You will receive a detailed, personalized event proposal by the next business day.

*Available only during Crowne Event Team's business hours.

DAILY MEETING DEBRIEF (assistance on the day of your event)

Our experienced team staff will assist you on the day(s) of your event and will ask for feedback to ensure your satisfaction.



GUEST ROOM

Our 412 rooms of various types will provide you with a pleasant stay, including the premium floor, which has just been refurbished in 2017. ANA CROWNE PLAZA original sleeping program "Sleep Advantage" offers our guests a pleasant and good night's sleep. Sleep Advantage provides you with original amenities such as eye-warmers and bath salts which gently relieve muscle tension, low-caffeine roasted tea before bedtime, and mint green tea with matcha powder for your refreshing morning. Our 24-hour fitness center is fully equipped with the latest fitness machines, fitness balls, stretch mats and so on to help maintain and improve your health and physical fitness (available for houseguests only).



RESTAURANT & BAR

As the food of Hokkaido is one of the biggest attractions, we offer three venues for breakfast: Western & Japanese buffet, Japanese style meal, and American breakfast.

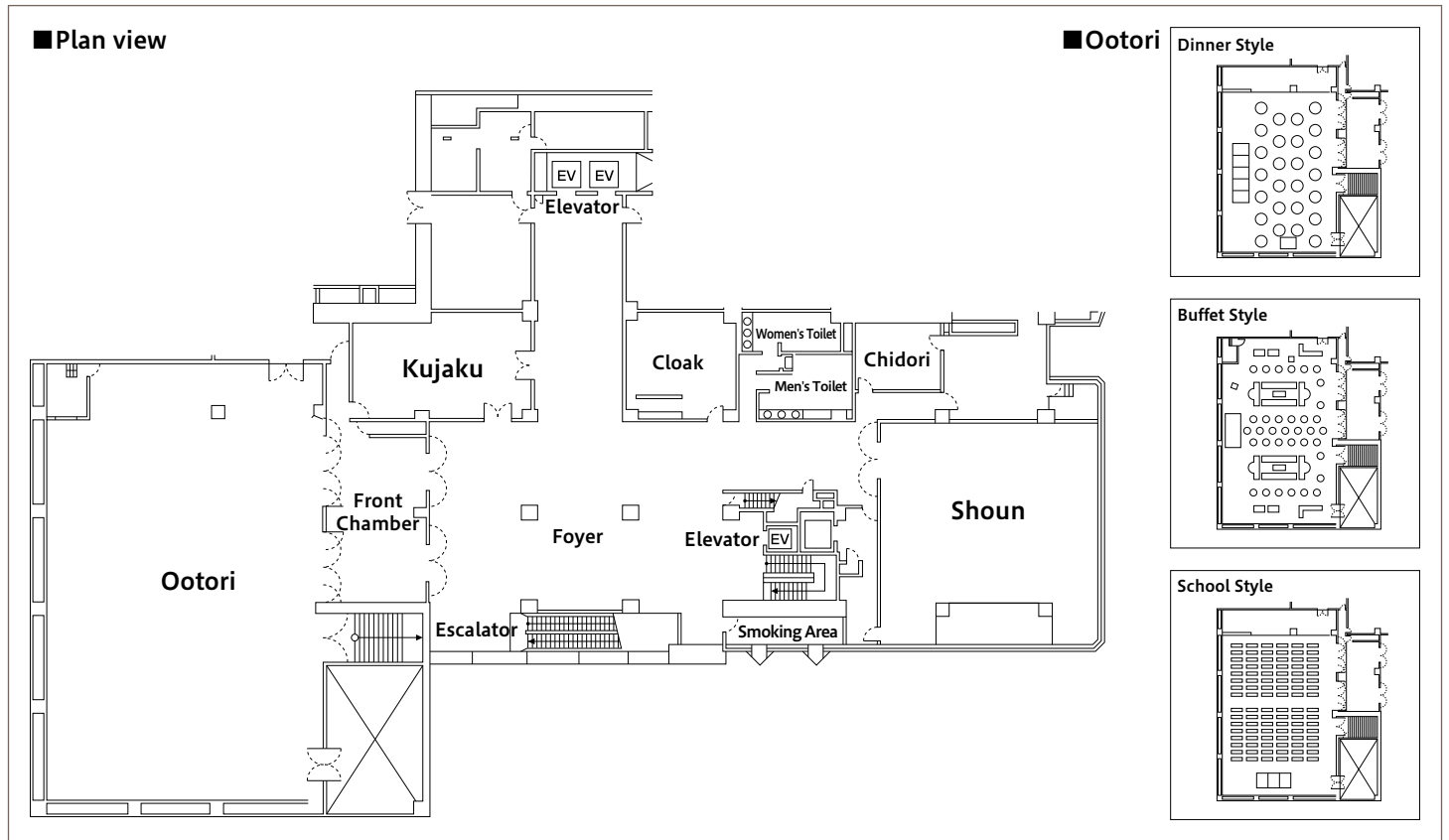
We have a variety of restaurants and bars to assist your pleasant stay. Our authentic teppanyaki restaurant offers specially selected Japanese beef and fresh seafood cooked on an iron plate in front of the guests. An all-day dining service serves plenty of local fresh ingredients and local wines made in Hokkaido. And you can refresh and ease fatigue at our sky lounge on the highest floor.

- Teppanyaki restaurant Ishikari
- Sky Lounge Sapporo View
- All Day Dining MEM
- Café Minamo
- Japanese restaurant Unkai
- Sushi restaurant Kiyohira

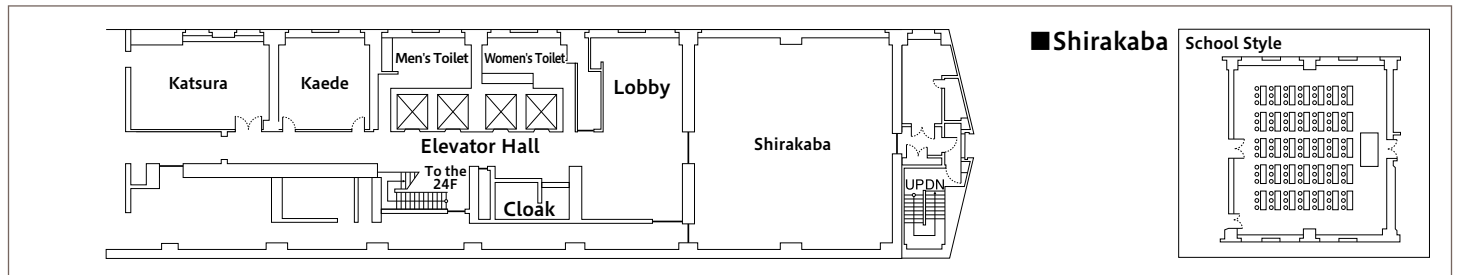


Banquet & Meeting Plan

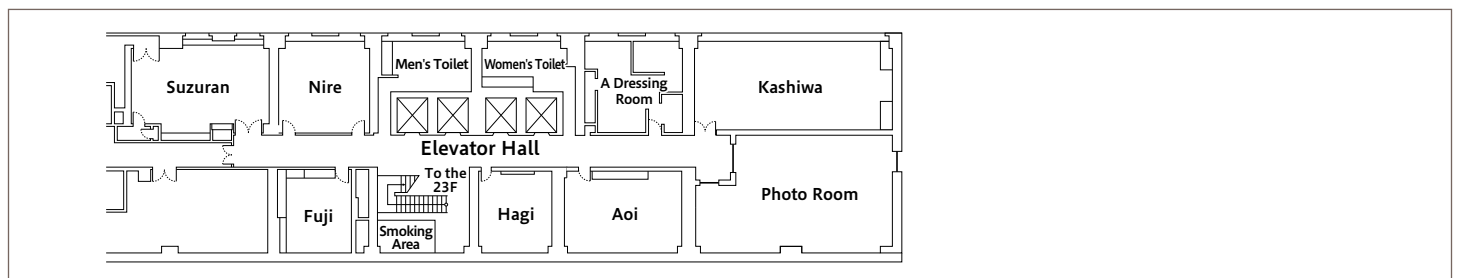
3F



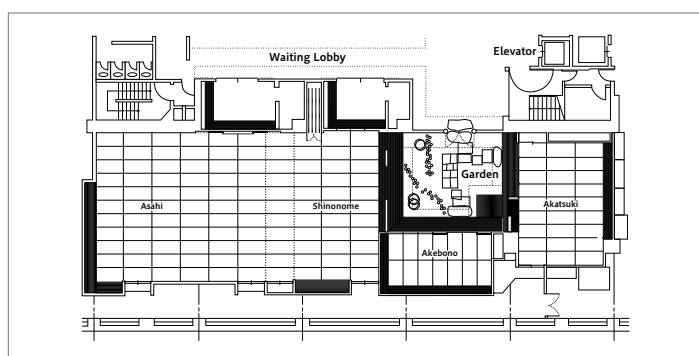
23F



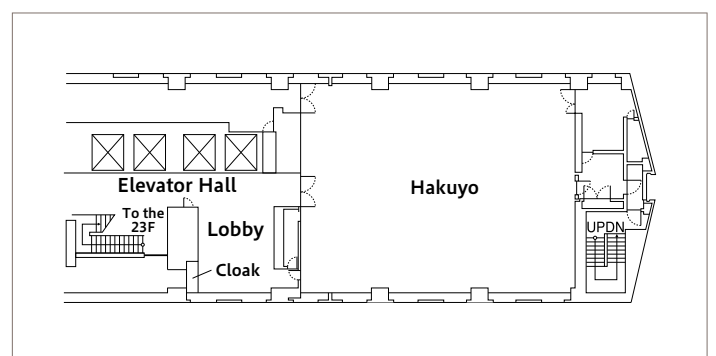
22F



B1F



24F



MEETING ROOMS

Banquet Halls Name	Floor	Area m ²	Ceiling cm	Seating Capacity		
				Dinner Style	Buffet Style	School Style
Ootori	3F	512	410	350	500	350
Shoun	3F	213	270	120	120	135
Hakuyo	24F	248	280	160	180	165
Shirakaba	23F	173	255	120	120	105
Top of Sapporo	26F	63	280	35	40	-
Moiwa	25F	69	260	30	40	30
Katsura	23F	52	260	30	30	30
Kaede	23F	35	250	20	-	18
Kashiwa	22F	64	250	30	40	30
Suzuran	22F	46	250	20	-	-
Nire	22F	37	250	20	-	18
Aoi	22F	36	250	20	-	18
Hagi	22F	30	250	10	-	12
Fuji	22F	30	250	10	-	12
Kujaku	3F	82	225	40	40	42
Chidori	3F	26	240	10	-	-
Asahi (Full Room)	B1F	182	260	100	-	-
Asahi (A Half Room)	B1F	109	260	60	-	-
Shinonome	B1F	54	260	40	-	-
Akatsuki	B1F	45	260	32	-	-
Akebono	B1F	23	260	12	-	-

LARGE BANQUET HALL

This room is equipped with chandeliers, a large screen installed and projector, etc., and offers different styles of table plans to meet the diversified needs of our clients including lecture meetings, international conventions, banquets, wedding receptions and more.



SKY BANQUET HALLS

Our Sky Banquet Halls offer a panoramic view of Sapporo, whose night view was chosen as one of the Japan's new top 3 cities for night views. From here, you see the former Hokkaido Government Office Building, a.k.a. Red Brick Office, or Mt. Moiwa and enjoy the changes of seasons. You will appreciate its elegant atmosphere with a superb night view from the upper floor.



JAPANESE STYLE BANQUET HALLS

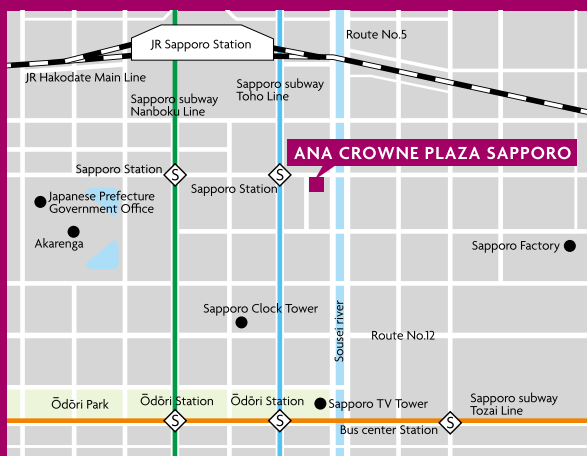
We have several tatami mat rooms, including a 170 square-meter tatami mat room, one of the largest Japanese style banquet halls in Sapporo, and smaller rooms. Its "sukiya" style adds a quaint atmosphere which makes you feel comfortable. Chairs are available upon request.



Sapporo is the economic, governmental, and cultural center of Hokkaido, and is now attracting much attention outside of Japan. We offer a "Meeting + Overnight Stay Package" including a meeting, a business dinner, and an overnight stay which makes it easier to get together from all over Japan or even from overseas. For pricing and more information, please contact us.

ANA CROWNE PLAZA SAPPORO

Banquet Sales Tel +81-11-242-1885 Fax +81-11-221-4499



1-minute walk from Subway Toho Line Sapporo Station Exit 21

Shuttle bus from New Chitose Airport - approx. 90 min

7-minute walk from JR Sapporo Station

ANA CROWNE PLAZA SAPPORO

2-9 Nishi 1-chome, Kita 3-Jo, Chuo-ku, Sapporo,
Hokkaido, 060-0003, Japan

Tel +81-11-221-4411 Fax +81-11-222-7624

www.anacpsapporo.com